

## Mechanical Design solutions



## CATIA V5

As one of the software applications that lies at the heart of the PLM solution set, CATIA Version 5 is the cornerstone of true integration between people, tools, methodologies and resources within an enterprise. Its unique product, process, resource model and workplace approach provide a fully collaborative environment that fosters creativity, knowledge sharing and the communication of three-dimensional (3D) product and process-centric definitions.

The ability to capture and reuse knowledge embedded within CATIA facilitates the implementation of corporate design best practices. It also frees end-users to concentrate on enhanced creativity and innovation.

In addition, the open CATIA V5 application architecture allows a vast and growing number of third-party vendors to submit specialised applications to meet targeted needs.



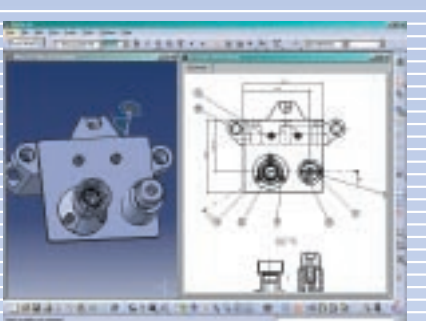
## Mechanical Design solutions

From concept to detailed design and onto drawing production, CATIA V5 mechanical design solution set accelerates the core activities of product development. Its products also address sheet metal and mold manufacturing requirements through dedicated applications that dramatically enhance productivity and reduce time-to-market.

The main highlights include:

- **An advanced 3D product creation package** – *This package includes comprehensive part and assembly design features, as well as associative drawing extraction capabilities. Designers will also find all the two-dimensional (2D) drafting capabilities required for efficient drawing production.*
- **Productive and intuitive design of sheet metal parts** – *The feature-based approach offers a highly productive and intuitive design environment. It allows for concurrent engineering between the folded or unfolded representation of the part to deliver increased levels of productivity.*
- **Rapid, cost-effective creation of mold tools** – *CATIA Mechanical Design products provide dedicated tools to address the plastic injection process. They also provide a fast splitting tool that takes a surface or solid part and separates it into a core and cavity with sliders and loose cores. These applications greatly enhance design productivity through advanced mold simulation features for the production of assembly drawings and the machining of mold assemblies.*
- **Simple and quick creation of all types of structures** – *This capability addresses preliminary and detailed design requirements for products such as heavy machinery and equipment, tooling jigs, shipbuilding foundations and manufacturing plant foundations.*
- **Specification-driven modelling, generative applications and controlled associativity** – *These features deliver highly productive and robust engineering change management. Engineering changes can be associatively propagated through the entire product definition and with related lifecycle processes. This dramatically reduces development time and costs, while eliminating any risk of human error or design inconsistency.*

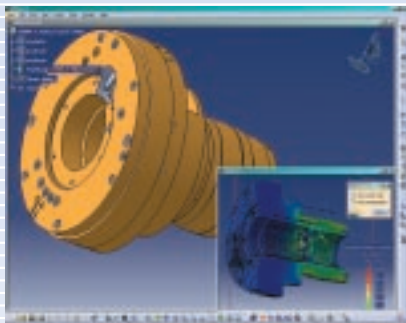
# Configurations



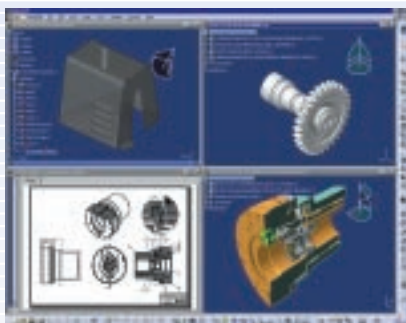
CATIA – Drafting 1 (DR1)



CATIA – Mechanical Design 1 (MD1)



CATIA – Mechanical Engineering 1 (ME1)



CATIA – Extended Mechanical Design 1 (XM1)

## CATIA – Drafting 1 (DR1)

Provides the necessary tools to produce industrial drawings. It includes data interfaces to the most frequently used industry standards, including CADAM drawings.

## CATIA – Mechanical Design 1 (MD1)

Provides the tools needed to perform 3D part and assembly design and generate production drawings. In addition, it includes integrated realtime rendering capabilities and supports data exchange using common industry standards, including the CADAM drawing data format.

## CATIA – Mechanical Engineering 1 (ME1)

Provides the tools needed to engineer 3D parts and assemblies and generate production drawings. Intuitive stress-testing functions also enable tools for earlier pre-validation of the parts available to all designers. In addition, ME1 includes integrated realtime rendering capabilities and data interfaces to the most common industry standards, including CADAM drawings.

## CATIA – Extended Mechanical Design 1 (XM1)

Provides an attractive solution for small and medium enterprises to access the full scope of PLM. XM1 is perfectly suited to various sectors, including industrial machinery or consumer goods. Its 3D product creation package contains comprehensive part and assembly design features, as well as associative drawing extraction capabilities. Designers will also find that it has all the 2D drafting features necessary for efficient drawing production.

To meet industrial-scale needs, the configuration has been reinforced with sheet metal design production capabilities, standard wireframe and surfacing features and dedicated welded assembly design features. In addition, the import and export of IGES and STEP data make collaborative design throughout the extended enterprise very easy. Users managing large assemblies will have particular use for other powerful product analysis features like distance measurement, dynamic sectioning and clash detection.

### **CATIA – Core and Cavity Design 2 (CV2)**

Provides all necessary tools needed to cover each step of the mold process in one seat. The mold maker would usually have to import some external data using IGES Interface in order to prepare the geometry for CATIA V5 modelling using Healing Assistant. Core and Cavity Design is then used to prepare the part for molding and splitting surfaces.

CV2 also offers wireframe, surface and part features for optimising surface geometry and improving the ability to manufacture a part on a global scale. This solution is easy to use, fully integrated and highly automated, according to the enterprise requirements.

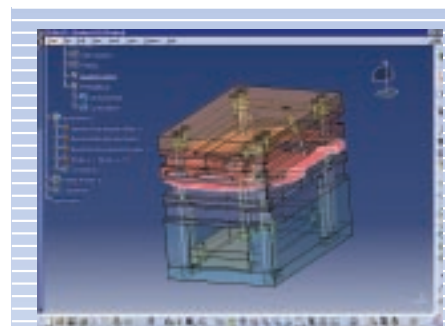
### **CATIA – Drawing Production 2 (DP2)**

Provides all the necessary tools to produce industrial drawings in one seat, either from 3D parts or in a pure 2D methodology. As a CATIA P2 configuration, DP2 offers integration tools that are compatible with CATIA V4. It also includes data interfaces to most frequently used industry standards, including CADAM drawings.

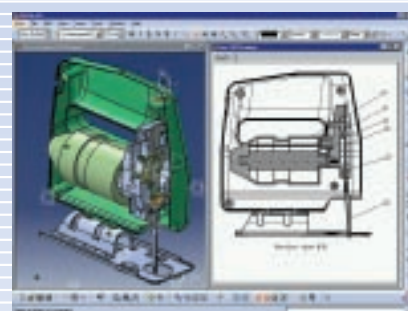
### **CATIA – Mechanical Design 2 (MD2)**

Provides in one seat all the necessary tools to perform advanced 3D design of parts and assemblies in the context of the full scale digital mock-up, and generation of production drawings. In addition, it includes integrated realtime rendering capabilities.

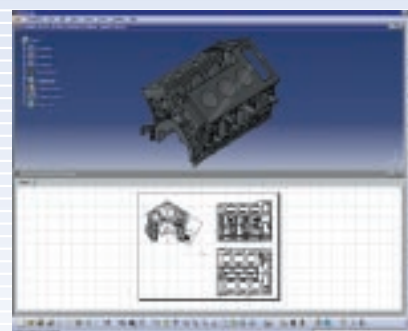
As a CATIA P2 configuration, MD2 offers advanced 3D orientation features, such as fly-through navigation and advanced specification graph display and manipulation. Customers benefit from its built-in interoperability with other CATIA V5 solution sets. It is the configuration of choice for existing CATIA V4 customers because it offers integration tools that are compatible with CATIA V5, as well as data interfaces to the most frequently used industry standards. Customers also benefit from a seat definition that can be seamlessly upgraded by the addition of shape design capabilities, allowing for the design of more complex parts using hybrid-modelling methodologies.



*CATIA – Core and Cavity Design 2 (CV2)*

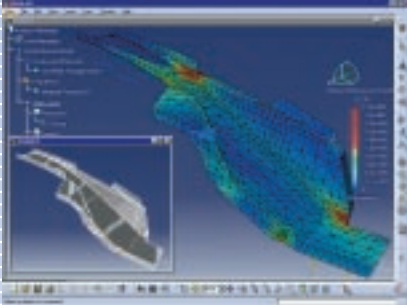


*CATIA – Drawing Production 2 (DP2)*



*CATIA – Mechanical Design 2 (MD2)*

# Configurations



CATIA – Mechanical Engineering 2 (ME2)



CATIA – Mechanism Simulation 2 (MS2)



CATIA – Sheet Metal Design 2 (SD2)

## CATIA – Mechanical Engineering 2 (ME2)

Provides in one seat all the necessary tools to perform advanced 3D engineering of parts and assemblies in the context of the full scale digital mock-up, and generation of production drawings. It also includes intuitive stress-testing functions, which makes the early pre-validation of parts available to all designers.

As a CATIA P2 configuration, ME2 offers advanced 3D orientation features, such as fly-through navigation and advanced specification graph display and manipulation. Customers benefit from its built-in interoperability with other CATIA V5 solution sets. It is the configuration of choice for existing CATIA V4 customers because it offers integration tools that are compatible with V4, as well as data interfaces to the most frequently used industry standards. Customers also benefit from a seat definition that can be seamlessly upgraded by the addition of shape design capabilities, allowing for the design of more complex parts using hybrid-modelling methodologies.

## CATIA – Mechanism Simulation 2 (MS2)

Provides all the necessary tools to perform advanced 3D design of parts and assemblies in one seat. DMU Kinematics Simulator 2 (KIN) easily simulates mechanism motion using mouse-based manipulation for the validation of mechanical mock-ups. This is a particularly relevant feature for people involved in activities ranging from the design of mechanisms to the functional verification of mechanical systems.

Customers also benefit from its built-in interoperability with other CATIA V5 solution sets. It is the configuration of choice for existing CATIA V4 customers because it offers integration tools that are compatible with V4.

## CATIA – Sheet Metal Design 2 (SD2)

Provides all the necessary tools to produce advanced sheet metal parts and assemblies in one seat. There are also tools to generate production-related drawings, verify the feasibility of creating and manufacturing a part and provide an interface to other, market-leading sheet metal manufacturing tools. It also includes data interfaces to the most frequently used industry standards, including CADAM drawings.

### **CATIA – Extended Mechanical Design 2 (XM2)**

Provides a 3D product creation package perfectly suited to various domains such as Industrial Machinery or Consumer Goods. This includes comprehensive part and assembly design features, as well as associative drawing extraction capabilities. Designers will also find that it has all the 2D drafting features necessary for efficient drawing production.

As a CATIA P2 configuration, XM2 offers advanced 3D orientation features such as the analysis of the degrees of freedom of a component. This enables a quick understanding of how the component is graphically constrained. Basic knowledge capabilities also allow designers to import and use corporate knowledge stored in rule databases to ensure the consistency and quality of their designs.

To meet industrial-scale needs, the configuration has been reinforced with sheet metal design production capabilities and advanced wireframe and surfacing features. Customers benefit from its built-in interoperability with other CATIA V5 solution sets. It is the configuration of choice for existing CATIA V4 customers because it offers integration tools that are compatible with V4 and data interfaces to most frequently used industry standards including CADAM drawings.

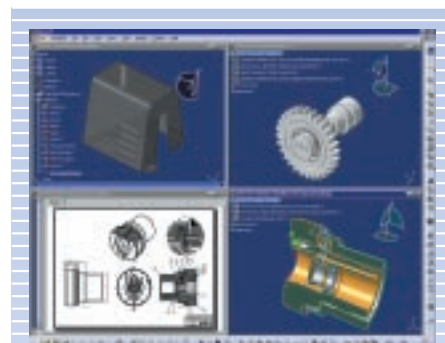
### **CATIA – Composites Design 3 (CD3)**

Provides all the tools needed to design composites parts for the purposes of a digital mock-up. In addition to its highly productive core product, CATIA – Composites Design 3 (CPD), CD3 delivers advanced mechanical and surfacic tools to underpin the efficient management of design changes. These tools are supported by knowledgware solutions, which enable the capture and reuse of corporate know-how and standard rule bases. CD3 therefore supports the user throughout the design cycle.

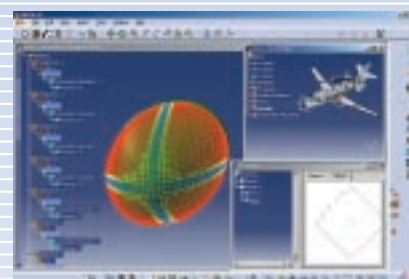
This composites design solution is fully integrated into the CATIA V5 Product Process Resource model that offers a perfect fit with the design-to-manufacturing process and therefore can help companies deliver the right-to-market products.

### **CATIA – Aerospace Sheet Metal Design 3 (SL3)**

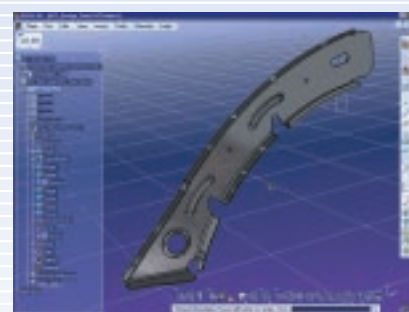
Provides all the necessary tools to perform advanced and specific 3D design of sheet metal parts used in the aerospace industry in one seat. It also delivers a full portfolio of productive and innovative Design and Drafting solutions to the user, including applications concerning shape design, image rendering and interfaces. The framework of this solution provides the user with overwhelming product and process integration expertise, where the highest productivity potential is focused on specific aerospace sheet metal processes.



*CATIA – Extended Mechanical Design 2 (XM2)*



*CATIA – Composites Design 3 (CD3)*



*CATIA – Aerospace Sheet Metal Design 3 (SL3)*

# Products

## **CATIA – Assembly Design 1 (AS1)**

Assembly Design 1 is a P1 product for managing assemblies in a highly productive way. It gives the user the ability to design in assembly context with a user-control associativity, to perform concurrent engineering between the design of the assembly and the design of individual components through a hierarchical assemblies using a top-down or bottom-up approach. Assembly Design 1 establishes mechanical assembly constraints using mouse movements or graphical commands to easily and intuitively snap parts into position.

Through a manual/automatic update choice, the designer can reorder the product structure, drags dynamically parts into position and makes collision and clearance checks. A productive work is provided through a catalog access for standard parts or assemblies, the access of advanced and powerful assemblies features, automatic exploded view generation and automated BOM generation. Assembly Designers get great time reduction and increased quality. Introducing an intuitive user interface, which is common across Windows® and UNIX®, offers productivity, ease of use, and low training costs.

## **CATIA – Functional Molded Part 1 (FM1)**

Functional Molded Part is a flexible and productive 3D modelling package dedicated to the design of molded and plastic parts. The application provides direct access to a collection of intuitive functional features that are the most useful for designing molded parts. For instance, commonly used core and cavity design functional features such as: Extrude, Revolve, Cut, Thicken surface, Rib, Boss, Cutout, Rest, Pocket, Grill, Reinforcement and Shell.

This new design approach enables the user to stay true to the design objectives while the geometric model is generated automatically to meet the requirements. Designs can be built and modified faster and more efficiently while capturing the intelligence necessary to improve the overall understanding of the design.

Instead of managing the design process by means of feature tree and design history, FM1 offers tools that define shape features – such as the core, shell and cavity of a mold. Users can see the resulting molded shape and choose to add incremental features that remain associated to the original feature rather than reflecting in a list of geometric attributes.

## **CATIA – Part Design Feature Recognition (FR1)**

Part Design Feature Recognition is intended to recognise Part Design feature from an Isolated B-Rep. This product is used to retrieve a comprehensive CATIA data structure (Part Structure) from an Isolated B-Rep Part. The user imports a part and can recover elementary Part Design features.

Part Design Feature Recognition is used to allow better downstream applications integration, to improve Part simplification for tool definition and flexible local design.

## **CATIA – 3D Functional Tolerancing and Annotation 1 (FT1)**

3D Functional Tolerancing and Annotation 1 is a new generation CATIA product addressing the easy definition and management of tolerance specifications and annotations of 3D parts and products. 3D Functional Tolerancing and Annotation 1 product provides an ideal solution for new CATIA customers in small and medium size industries, looking to reduce reliance on 2D drawings and increase the use of 3D as the master representation.

### **CATIA – Generative Drafting 1 (GD1)**

Generative Drafting for CATIA-P1 allows users to automatically generate associative drafting from 3D mechanical designs and assemblies produced with CATIA Version 5. When combined with Interactive Drafting, the Generative Drafting product 1 benefits both from integrated 2D interactive functionality and from a higher productive environment for drawings dress-up and annotation.

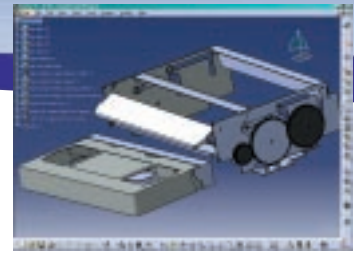
Generative Drafting 1 product offers a flexible and scalable solution accommodating drawing generation requirements for sheetmetal, surface and hybrid parts or assemblies. A drawing creation assistant, or 'wizard' simplifies the generation of multiple-view drawings. 3D dimensions can be automatically generated. Designers are able to associate patterns with part material specifications and add post-generation annotations with standards-based dress-up features. Associativity of the drawings to the 3D master representation enables users to concurrently work on their designs and drawings.

### **CATIA – Healing Assistant 1 (HA1)**

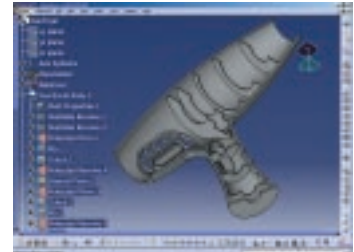
Healing Assistant product provides users reconciliation and fixing tools to heal parts to be used in downstream applications such as manufacturing, analysis or tooling design.

This product helps user checking validity of imported data (surfaces or solids) with regard to V5 modeling criteria, then correcting or improving the topology and the geometry of the analysed objects.

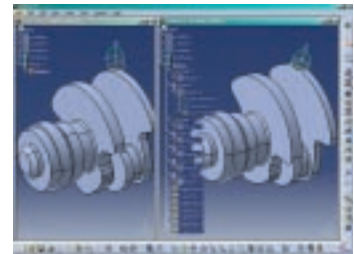
CATIA – Healing Assistant 1 (HA1) is perfectly suited for designers who have to deal with complex parts from various CAD applications and formats. This product allows them to make their Parts 'V5 compliant' to be able to reuse components in any V5 applications. The mold and die tooling process is particularly impacted by these advanced capabilities, as tooling is often done by sub-contractors receiving data exported by their OEMs in standard formats such as IGES or STEP. But Healing Assistant is also very useful for data migration, for example, for companies who need to migrate data from their previous CAD (including CATIA V4) to their new CATIA V5 environment.



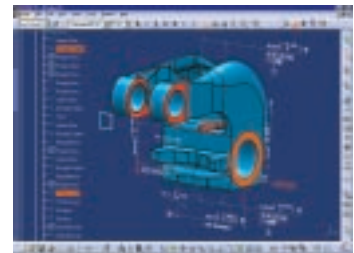
CATIA – Assembly Design 1 (AS1)



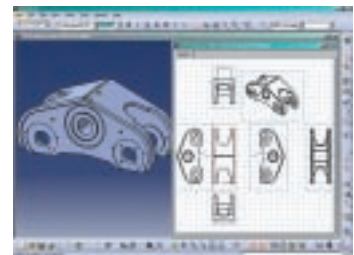
CATIA – Functional Molded Part 1 (FM1)



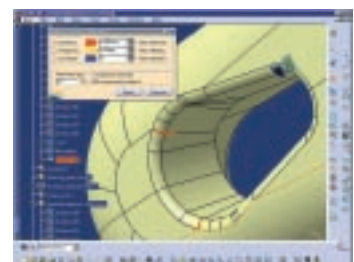
CATIA – Part Design Feature Recognition (FR1)



CATIA – 3D Functional Tolerancing and Annotation 1 (FT1)



CATIA – Generative Drafting 1 (GD1)



CATIA – Healing Assistant 1 (HA1)

# Products

## **CATIA – Interactive Drafting 1 (ID1)**

Interactive Drafting is a new generation CATIA product to address 2D design and drawing production requirements. It offers a highly productive, and intuitive, interactive drafting system. It also enriches Generative Drafting with both integrated 2D interactive functionality and with a productive environment for drawings dress-up and annotation.

## **CATIA – Part Design 1 (PD1)**

Part Design 1 provides a basic set of integrated multi-discipline tools for part design. Using the best-in-class feature approach combined with Boolean tools, the user can integrate multiple product views and constraints. Designers choose between single part sketching or working in the assembly context, and benefit from the controlled associativity which promotes a collaborative design.

With clear specification management tools, modifications can be made and the impact assessed quickly. This capability is ideal for multi-user environments and productive iteration. The benefits of this approach are maximised when combined with others V5 applications for styling, mechanical surfaces definition, assembly modelling and downstream documentation.

## **CATIA – Sheet Metal Production 1 (SH1)**

Sheet Metal Production is addressing the manufacturing preparation for sheetmetal parts. In combination with SMD, it provides a solution that covers the design to manufacturing process of sheetmetal parts.

## **CATIA – Sheet Metal Design 1 (SM1)**

Sheetmetal Design 1 is dedicated to the design of sheet metal parts. Its feature-based approach offers a highly productive and intuitive design environment. It allows concurrent engineering between the folded or unfolded representation of the part.

CATIA – Sheetmetal Design 1 can be cooperatively used with other current or future applications of CATIA Version 5 like part design, assembly design and drawing generation. As sheetmetal design may start from scratch or from an existing solid, communication between suppliers and contractors is empowered.

Sheetmetal Design 1 offers the same ease-of-use and user interface consistency as all CATIA V5 applications to drastically reduce training cycle time and unleash designer creativity.

## **CATIA – Structure Design 1 (SR1)**

Structure Design product is an application enabling to simply and quickly creates linear, curved structures, and plates, using standard or user-defined sections. Taking advantage of an optimised user interface, the user can easily create and modify structures thanks to fully associative design in context capability.

Moreover, the product includes a parametric catalog through design tables and it generates user customisable Bills of Materials (BOMs). It is natively integrated with other CATIA applications for completing the structure design, user will be able, for instance, to perform extensive stress analysis on his structure elements and beams.

## **CATIA – Tooling Design 1 (TG1)**

Dedicated to generic and user Tooling Component management, Tooling Design provides to small mold makers a toolset to support the end to end process. This new product covers all productivity features such as positioning and multi instance management and also delivers all needed features for process integration up to drafting and manufacturing (drilling, splitting, propagation of user intent). Moreover, the product includes a rich content through catalogs and samples.

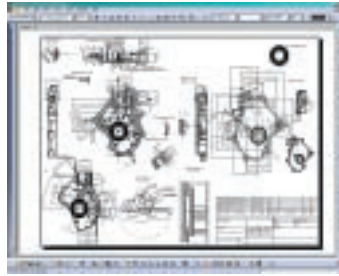
### **CATIA – Welding Design 1 (WD1)**

Weld Design is an application addressing welded assemblies. Fifteen weld types (ISO standard) are provided to the user to create welds, part preparation and relevant annotations.

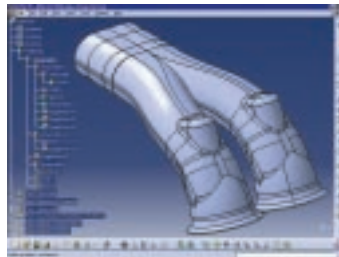
This product addresses Machinery and Tooling industries through advanced welding processes. The creation of the weld in the 3D digital mock-up will allow designer to manage digital pre-assembly, mass inertia, space reservation and drafting annotation.

### **CATIA – Wireframe & Surface 1 (WS1)**

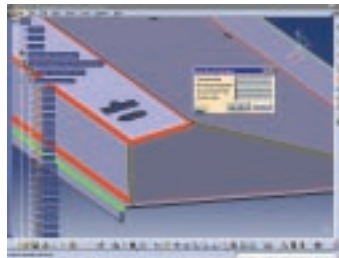
Wireframe & Surface is used to create wireframe construction elements during the preliminary design phase. It can also enrich existing 3D mechanical part design with wireframe and basic surface features. Its feature-based approach contributes to a productive and intuitive design environment where design methodologies and specifications can be captured and reused.



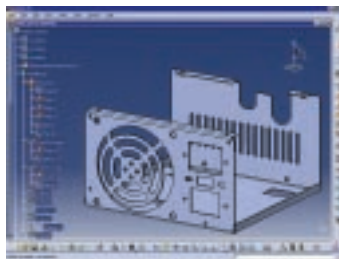
CATIA – Interactive Drafting 1 (ID1)



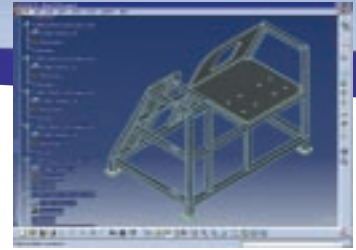
CATIA – Part Design 1 (PD1)



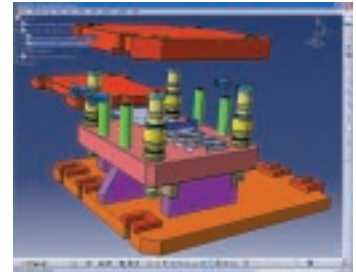
CATIA – Sheet Metal Production 1 (SH1)



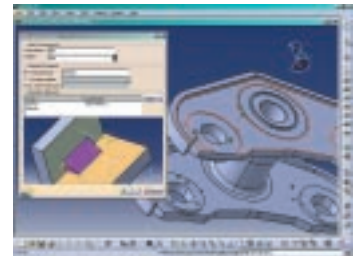
CATIA – Sheet Metal Design 1 (SM1)



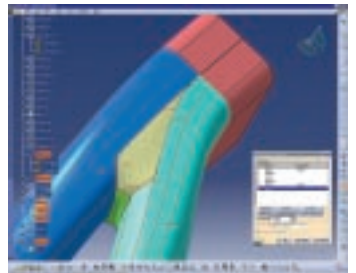
CATIA – Structure Design 1 (SR1)



CATIA – Tooling Design 1 (TG1)



CATIA – Welding Design 1 (WD1)



CATIA – Wireframe & Surface 1 (WS1)

# Products

## **CATIA – Assembly Design 2 (ASD)**

Assembly Design 2 offers a new generation CATIA P2 product for managing assemblies.

Assembly Design products integrate with other CATIA Version 5 applications like part design and drawing generation.

Assembly Design 2 establishes mechanical assembly constraints using mouse movements or graphical commands to easily snap parts into position. Assembly Design 2 helps designers managing large, hierarchical assemblies of CATIA V4, V5, VRML or STEP parts using a top-down or bottom-up approach. Parts and sub-assemblies are easily reused in the assembly without data duplication.

Productivity tools like automatic exploded view generation, collision and clearance checking. Automated BOM generation greatly reduce time and increase quality. Flexible sub-assembly gives user the ability to dynamically unlink product structure and mechanical behaviour. This unique command allows to move individual component in the parent assembly or to manage different internal positions of instantiated sub-component.

## **CATIA – Core & Cavity Design 2 (CCV)**

Core & Cavity Design allows rapid and cost effective design of the core and cavity used in mold tooling or manufacturing equipment.

This products provides a fast splitting tool that takes a surfacic or solid part and separates it into core and cavity with sliders and loose cores.

Core & Cavity Design is a stand-alone product that determines the ability of a component to be manufactured thanks to technological criteria (moldability). This product allows also the user to fill up technological holes within the core and cavity surfaces, identify the parting lines and to generate the parting surfaces.

## **CATIA – Cast & Forged Part Optimizer 2 (CFO)**

Cast & Forged Part Optimizer is an add-on for Part Design 2 (PDG) dedicated to the detailed design of molded & forged parts. Cast & Forged Part Optimizer delivers advanced part design functions that extend the power of dress-up features. These advanced functions are based on innovative and unique patented technology that provides significant gains in quality and productivity. Dedicated to the casting and forging process, this add-on is totally integrated into the entire CATIA V5 application portfolio. Users can finish their design with CATIA – Part Design 2 (PDG), avoiding the need to make repetitive use of surface and wireframe operations. The user benefits from improved robustness, higher productivity (fewer clicks), greater stability following design changes; and a reduction in prerequisite learning activity.

### **CATIA – 3D Functional Tolerancing and Annotation 2 (FTA)**

3D Functional Tolerancing and Annotation 2 is a new generation CATIA product addressing the easy definition and management of tolerance specifications and annotations of 3D parts and products.

The intuitive interface of 3D Functional Tolerancing and Annotation product provides an ideal solution for new CATIA customers in small and medium size industries, looking to reduce reliance on 2D drawings and increase the use of 3D as the master representation. 3D annotations can be extracted, using the annotation plane concept in CATIA – Generative Drafting products. Besides syntactic and semantic verification command allows the user to check the correctness of all the annotations of the active product or part regarding to the standard used.

Finally, the 3D annotations can be reviewed using ENOVIA – DMU Dimensioning & Tolerancing 1 product (DT1) or DELMIA – DMU Dimensioning & Tolerancing Review 2 product (MTR), which offers comprehensive tools for interpretation of annotations and tolerances on specific areas of the design or across the complete digital mock-up.

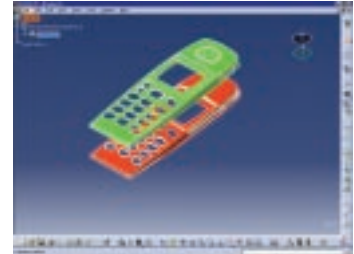
### **CATIA – Generative Drafting 2 (GDR)**

Generative Drafting for CATIA-P2 is a new generation CATIA product which allows users to automatically generate associative drafting from 3D mechanical designs and assemblies produced with CATIA Version 5. When combined with Interactive Drafting, the Generative Drafting 2 product benefits both from integrated 2D interactive functionality and from a higher productive environment for drawings dress-up and annotation.

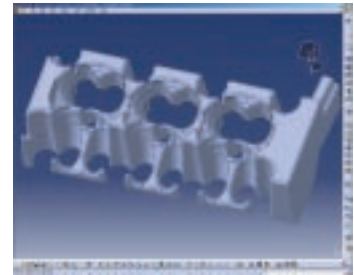
Generative Drafting 2 product offers a flexible and scalable solution to create associative drawings from 3D mechanical designs, surfaces, hybrid parts and assemblies created with CATIA Version 4 or Version 5. 3D dimensions can be automatically generated with control over their placement. Designers are able to add post-generation annotations with standards-based dress-up features. Associativity of the drawings to the 3D master representation enables users to concurrently work on their design and drawings.



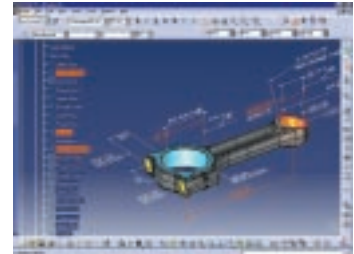
CATIA – Assembly Design 2 (ASD)



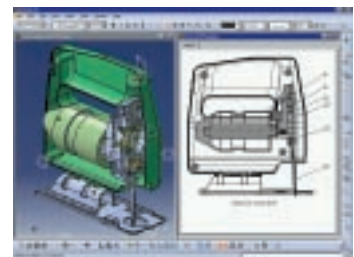
CATIA – Core & Cavity Design 2 (CCV)



CATIA – Cast & Forged Part Optimizer 2 (CFO)



CATIA – Functional Tolerancing and Annotation 2 (FTA)



CATIA – Generative Drafting 2 (GDR)

# Products

## **CATIA – Part Design 2 (PDG)**

Part Design 2 extends the basic set of integrated multi-discipline tools within CATIA Part Design 1 (PD1) to provide unique industry features. Part Design 2 supports all the demanding design applications, such as powertrain, plastic parts, and aerospace structure. Based on a template approach, users can proliferate in a simple manner dedicated complex features, optimising time design and iteration. Enriching a knowledge template repository, they can use the old project as best practices for the coming ones. Due to V5 integration, those templates inputs shared a common multi-disciplinary approach such as tooling specifications, analysis, manufacturing constraints, usability.

## **CATIA – Mold Tooling Design 2 (MTD)**

CATIA Mold Tooling Design product manages mold tool definitions. It can be cooperatively used with other current or future design, simulation and manufacturing applications of CATIA Version 5 to offer high productivity. It allows rapid, cost effective creation of mold tooling for the plastic injection process thanks to the use of predefined components from standard catalogues with specific functionality to define mold components and instantiations.

A mold designer can benefit from a dedicated workbench to support all their tasks, like mold base definition, component instantiation, injection and cooling feature definitions, and others which are necessary to define a complete mold tooling.

Mold designers can generate dedicated and customisable Bills of Materials (BOM's) including specific attribute of the mold (material, heat treatment) and automatic nomenclature from the configuration of the component. Textual format, HTML or XLS (Excel) formats can be generated interactively. The BOM can also be based on user-defined attributes.

## **CATIA – Sheet Metal Design 2 (SMD)**

Sheetmetal Design 2 is a new generation CATIA product dedicated to the design of SheetMetal parts. Its feature-based approach offers a highly productive and intuitive design environment. It allows concurrent engineering between the folded or unfolded representation of the part.

Sheetmetal Design 2 can be cooperatively used with other current or future applications of CATIA Version 5 like part design, assembly design and drawing generation. As sheetmetal design may start from scratch or from an existing solid, communication between suppliers and contractors is empowered. It includes many standard design features, such as stiffeners, stamped shapes and swept features.

CATIA – Sheetmetal Design 2 offers the same ease of use and user interface consistency as all CATIA V5 applications to drastically reduce training cycle time and unleash designer creativity. It also provides multiple interoperability functions with CATIA V4 sheetmetal products.

### **CATIA – Aerospace Sheet Metal Design 3 (ASL)**

Generative Aerospace Sheetmetal Design is a product dedicated to the definition of sheetmetal parts used in the aerospace industry (hydro-pressed or break-formed). It enables the capture of company knowledge, including design, and manufacturing constraints.

Generative Aerospace Sheetmetal Design product is based on feature modeling techniques, using a pre-defined set of features used for sheetmetal parts designed in the aerospace industry.

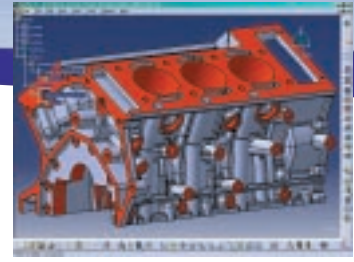
Based on both specification-driven and generative approaches, this product will allow typical hydro-formed aerospace parts to be easily specified, the system taking care of creating both 3D and flattened part geometry. Where such parts are designed or modified with basic modelling tools within hours or days, this product allows same result to be achieved in minutes.

CATIA Generative Aerospace Sheetmetal Design provides an interactive function to design sheetmetal parts in a very intuitive way, taking manufacturing constraints into accounts. It provides the flat pattern of the sheetmetal part, and allows easy incremental design (from preliminary to detailed stages) and modification both in 3D and flattened conditions.

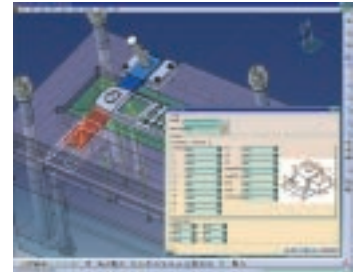
Whenever initial specifications are changed (for example, the aircraft skin on which a frame has been designed is modified), this product will allow new part to be automatically rebuilt, based on new specifications.

### **CATIA – Composite Design 3 (CPD)**

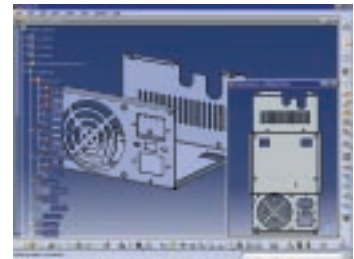
Composites Design is an advanced composites process centric solution that allows manufacturers, from aerospace to automotive or consumer goods companies, to reduce the time needed to design composites parts. It delivers tools to cover both the preliminary and detailed design phases while taking into account, even at the concept stage, the product's requirements and its manufacturability. Composites Design uniquely delivers a powerful composites design solution with all the advantages of the CATIA V5 architecture: native integration, pervasive knowledgeware capabilities, and CATIA V5's ease-of-use.



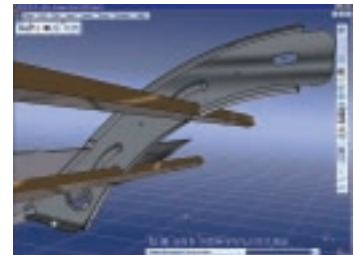
*CATIA – Part Design 2 (PDG)*



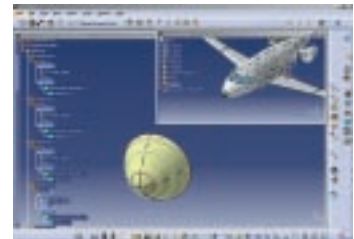
*CATIA – Mold Tooling Design 2 (MTD)*



*CATIA – Sheet Metal Design 2 (SMD)*



*CATIA – Aerospace Sheet Metal Design 3 (ASL)*



*CATIA – Composite Design 3 (CPD)*



For more information contact your IBM Marketing Representative, IBM Business Partner, or call one of the numbers below:

#### AMERICAS

<b>USA</b>	Toll-free 1 800 395 3339
<b>Canada</b>	(514) 938 6718
<b>Argentina</b>	(54) 11 4319 6594
<b>Brazil</b>	(55) 11 3050 5542
<b>Mexico</b>	(1) (52) 5 270 64 25

#### ASIA / PACIFIC

<b>Australia</b>	02 9842 9555
<b>China</b>	86 10 6539 1188 ext. 4774
<b>Hong Kong</b>	2825 7614
<b>India</b>	91 20 649724 / 649621
<b>Indonesia</b>	021 5238622
<b>Japan</b>	3 3808 8510
<b>Korea</b>	822 3781 7583
<b>Malaysia</b>	(603) 7720 2069
<b>New Zealand</b>	+64 9 359 8785
<b>Philippines</b>	2 819 2345
<b>Singapore</b>	65 320 1234
<b>Taiwan</b>	02 725 9493
<b>Thailand</b>	2 273 4406

#### EUROPE / MIDDLE EAST / AFRICA

<b>Austria</b>	1 211 45 2273
<b>Belgium</b>	2 225 2901
<b>CEMA</b>	+42 12 4954 1225
<b>Czech Republic</b>	27 213 1742
<b>Denmark</b>	45 233000
<b>Egypt</b>	539 2539
<b>Finland</b>	(0) 9 459 4151
<b>France</b>	01 49 05 70 64
<b>Germany</b>	01 805 426 756
<b>Greece</b>	1 688 14 76
<b>Hungary</b>	01 382 5500
<b>Israel</b>	(972) 3 697 8586
<b>Italy</b>	(39) 039 600 3767
<b>Netherlands</b>	020 513 3769
<b>Norway</b>	66 99 9361
<b>Poland</b>	22 878 6145
<b>Portugal</b>	21 7915005
<b>Romania</b>	21 224 1544
<b>Russia</b>	095 940 2000
<b>Slovakia</b>	+42 12 4954 1225
<b>Slovenia/Croatia</b>	01 479 6676
<b>South Africa</b>	0860 788 788
<b>Spain</b>	(34) 91 397 66 11
<b>Sweden</b>	8 763 4394
<b>Switzerland</b>	+41 58 333 5370
<b>Turkey</b>	0212 317 1305
<b>United Kingdom</b>	0870 010 2510

#### IBM Eurocoordination

Product Lifecycle Management  
Tour Descartes  
La Defense 5  
2, avenue Gambetta  
92066 Paris La Defense Cedex  
France

The IBM home page can be found at [ibm.com](http://ibm.com)

IBM, the IBM logo and the On Demand Business logo are registered trademarks of International Business Machines Corporation in the United States, other countries, or both.

CATIA® is a registered trademark of Dassault Systèmes.

Microsoft and Windows are trademarks of Microsoft Corporation in the United States, other countries, or both.

UNIX is a registered trademark of The Open Group in the United States and other countries.

Other company, product and service names may be trademarks, or service marks of others.

References in this publication to IBM products, programs or services do not imply that IBM intends to make these available in all countries in which IBM operates. Any reference to an IBM product, program or service is not intended to imply that only IBM products, programs or services may be used. Any functionally equivalent product, program or service may be used instead.

IBM hardware products are manufactured from new parts, or new and used parts. In some cases, the hardware product may not be new and may have been previously installed. Regardless, IBM warranty terms apply.

This publication is for general guidance only. Information is subject to change without notice. Please contact your local IBM sales office or reseller for latest information on IBM products and services.

Photographs may show design models.

© Copyright IBM Corporation 2005.  
All Rights Reserved.

[ibm.com/solutions/plm](http://ibm.com/solutions/plm)