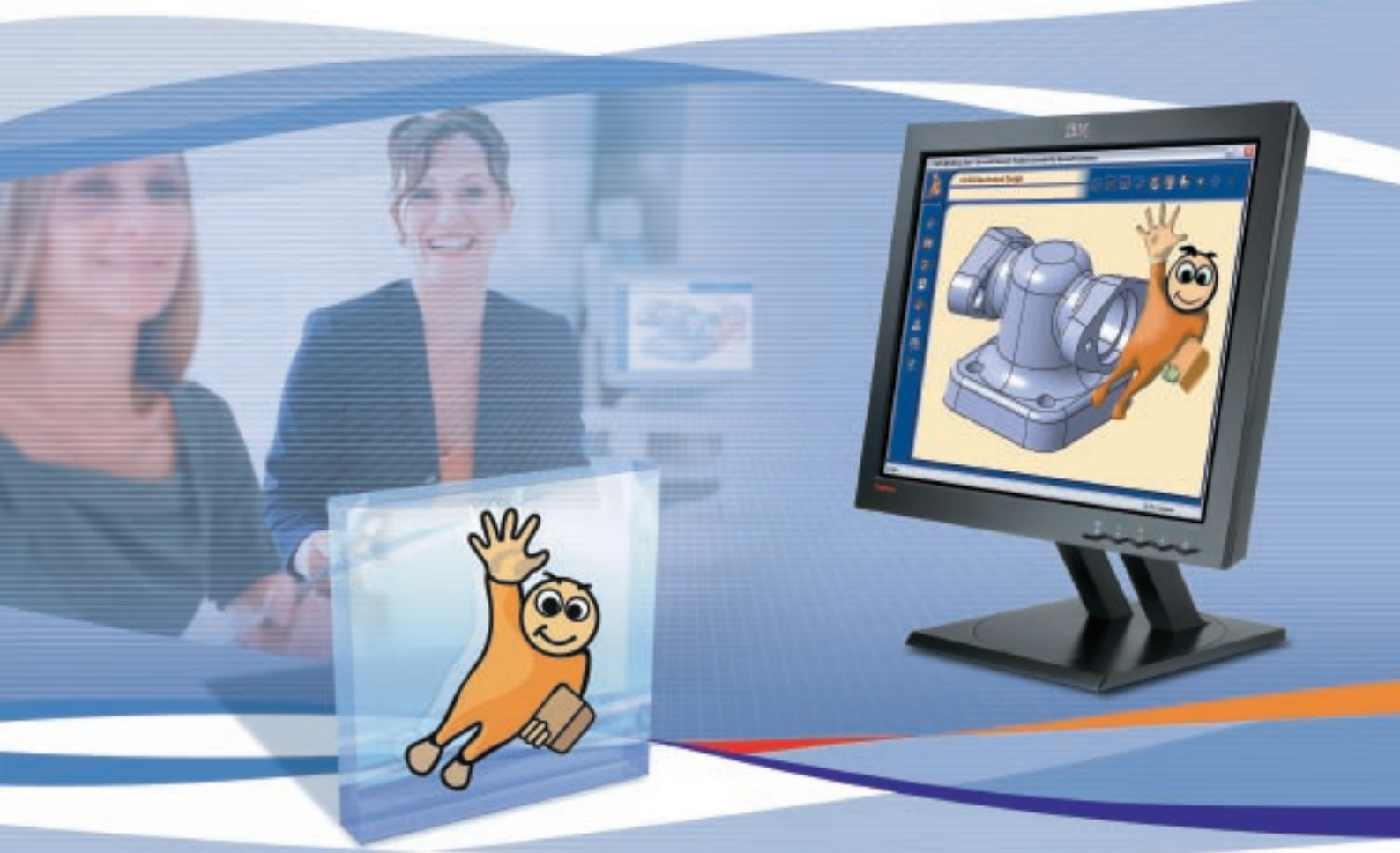


## Web-based Learning Solutions



## Web-based Learning Solutions

CATIA Version 5, ENOVIA and SMARTEAM Web-based Learning Solutions (WLS) is an easy-to-use learning and support system.

It provides all the required information and training in one source for maximum assured productivity of the user community.

Extending the knowledge of CATIA or ENOVIA or SMARTEAM anytime with an everyday 'companion'.

The companion provides a set of learning resources, known as 'skillets', which are carefully designed to acquire or enhance a given skill in a short time. These skillets provide an interactive experience that includes different learning components such as 'show me', 'do it', 'monitored practice' and 'quiz'. The variety of components makes skillets highly adaptive to the user's learning style and preferences.

Skillets are packaged as full courses but are equally accessible via the companion desktop individually. Among them, the 'update' courses provided with each new release are an efficient way to keep the user community up-to-date with the new product capabilities, thereby insuring the most efficient usage of CATIA, ENOVIA or SMARTEAM products.

The tracking mechanism and icon-based codification features of companion allow the user to quickly select the most relevant component while maintaining a global view of learning resources available.

The companion can also be configured with several collaborative tools such as frequently asked questions (FAQs), forums and email to the support desk or local tutor.

Combining Internet/Intranet standards and client/server architecture on Windows® and UNIX®, Companion is very easily deployed and administered within a company and may also be easily installed as stand alone.

Customisation according to a company's needs. As companies have their own specifications, the Companion Development Studio provides the capability to fully customise WLS products.



# Products

## CATIA Web-based Learning Solutions

### CATIA User Companion for Mechanical Design (MDS)

CATIA User Companion for Mechanical Design product provides a list of courses for all users of mechanical design products. The education content in this product has 3 objectives:

- *The first one is to explain CATIA V5 interface and philosophy. The user will get the right automatisms such as objects' organisation, and how to begin a new project with the appropriate basic features.*
- *The second one is to cover the mechanical items such as 3D modeling, the drawing, the assembly including design in context, the associativity, the first implementation of knowledgware, and the link management.*
- *The last one is to leverage the user skill in the mechanical workbenches, the logical flow in design, and how to navigate in the workbenches thanks to a process centric project.*

CATIA User Companion for Mechanical Design extends V5 mechanical design skills from fundamentals to expertise level.

The goal of this product is to be used as an electronic performance support system for any mechanical product even at the entry PLM level.

### CATIA User Companion for Hybrid Design (HDS)

This product teaches the user how to implement mechanical surfaces in a design process. After a review of shape design basics tools, the user follows an expert process embedding 7 steps from advanced wireframe creation to a solid part creation with a hybrid design methodology. In those steps, he will learn right automatisms involved in expert design surface such as quality analysis, repair methodology, fillet creation.

This CATIA User Companion for Hybrid Design completes the surface course included in CATIA User Companion for Mechanical Design. It is targeting advanced generative surface engineering.



CATIA User Companion for Mechanical Design (MDS)



CATIA User Companion for Hybrid Design (HDS)

# Products

## *CATIA Web-based Learning Solutions*

### **CATIA User Companion for Structural Analysis (SAS)**

CATIA User Companion for Structural Analysis describes tools for structural analysis of a single part based on finite elements method. It allows a user to implement short loop analysis in his design process. After an introduction to the Generative Part Structural Analysis workbench, the companion explains in a pre-processing lesson the first steps of CAD preparation including how to mesh a part with a good quality, define properties, apply loads and restraints. The computation lesson explains how to run analyses and to store them. The last lesson covers the post-processing phase describing the different tools to display results such as image generation and video report publishing. Furthermore, it includes adaptative methodology for accuracy improvement. CATIA User Companion for Structural Analysis presents the easiest and most efficient methods to all users of CATIA Generative Part Structural Analysis 1 and 2 products.

### **CATIA User Companion for Extended Structural Analysis (EAS)**

CATIA User Companion for Extended Structural Analysis describes tools, based on finite elements method, for advanced structural analysis. It covers 3 main areas, which are the analysis of an assembly, the dynamic analysis and the expert one provided with the Elfini solver.

After an introduction to the Generative Assembly Structural Analysis workbench, the companion explains in a first lesson the different types of connection technologies that can be defined between parts in an assembly. The companion guides the user's choice in view of the targeted mechanical behavior.

A second lesson covers the advanced tools provided by Elfini Structural Analysis such as post-processing and analysis data management.

A third lesson details a dynamic response solved with Elfini.

At the end of each lesson, the user can practice on 2 different recap exercises to assess that he acquired a good understanding of the method.

### **CATIA User Companion for Sheetmetal (SMS)**

This product teaches the user how to use the Generative Sheetmetal Design workbench. It is structured through a recommended process and leverages right automatisms in sheetmetal part creation. Illustrated with a master exercise, the process starts from wall and bend design, covers the cutouts and modification, analyses sheetmetal consistency, and finishes with standard output generation such as drawings and dxf files.

Through methodology skillets providing recommendations in sheetmetal design, the user gets advices from experts on how to best use the different tools of the workbench.

All concepts are highly illustrated with at least 2 exercises per lesson which means about 30 minutes of practice time.

This CATIA User Companion for Sheetmetal completes CATIA User Companion for Mechanical Design with Sheetmetal Design. It is very well suited for entry PLM users.

### **CATIA User Companion for V4 Mechanical Design Product (M4S)**

This product is ideally suited for current owners of the CATIA V4 configuration 'Solid Based Design' or of configuration that include the suite of products covered by CATIA Mechanical Solid Based Part Design and Detailing Configuration.

Beside many skillets and job aids adapted to the products of this configuration, the M4C provides prepackaged courses:

Courses for new users:

- *Introduction to CATIA*
- *Models and Sessions*
- *Dynamic Sketcher*
- *Solid Design*
- *Generative Drafting*.

Update courses:

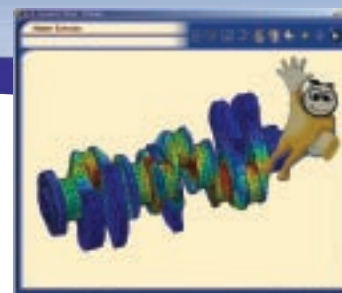
- *Solid Design Updates*
- *Sketcher Design Updates*
- *Drafting Design Updates*.

### **User Companion for DMU (DNS)**

User Companion for DMU provides education support on the following products: CATIA/ENOVIA DMU Navigator, DMU Space Analysis, and DMU Optimizer. Beside the many skillets and job aids designed to be called on-demand in an EPSS (Electronic Performance Support System) mode, the User Companion for DMU provides recommended usage in main digital mock-up processes.

### **Companion Development Studio (CDS)**

The Companion Development Studio provides companies with the capability to customise the WLS suite of products. Through an intuitive interface, the sophisticated companion environment allows the development of integrated learning resources for CATIA, ENOVIA and SMARTEAM products usage. One can develop, assemble brand new material while reusing existing 'skillets', rearranging existing products to fit targeted users, and add specific company's information into this customised learning environment. The Companion Development Studio promotes also the development of sound learning objects around a proven and robust instructional design model that is currently used by the WLS suite of products. Furthermore Companion Development Studio supports a continuous improvement process for the new learning objects.



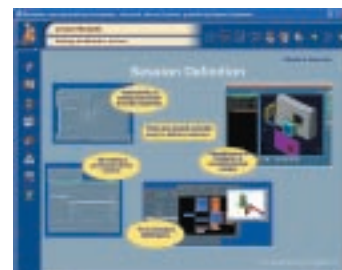
*CATIA User Companion for Structural Analysis (SAS)*



*CATIA User Companion for Extended Structural Analysis (EAS)*



*CATIA User Companion for Sheetmetal (SMS)*



*CATIA User Companion for V4 Mechanical Design Product (M4S)*



*User Companion for DMU (DNS)*



*Companion Development Studio (CDS)*

# Products

## *ENOVIA Web-based Learning Solutions*

### **ENOVIA User Companion for VPM (VMS)**

This product is ideally suited for the users of ENOVIA VPM products. Beside skillets and job aids, the ENOVIA User Companion for VPM is designed to be used in an Electronic Performance Support System mode. It includes courses covering an introduction to Virtual Product Management, product structure management, action flow, configuration management, change management, administration, VPM interoperability with CATIA V5. In these courses, the engineer, casual user, manager, administrator and technical roles are taken into account.

### **User Companion for DMU (DNS)**

User Companion for DMU provides education support on the following products: CATIA/ENOVIA DMU Navigator, DMU Space Analysis, and DMU Optimizer. Beside the many skillets and job aids designed to be called on-demand in an EPSS (Electronic Performance Support System) mode, the User Companion for DMU provides recommended usage in main digital mock-up processes.

### **ENOVIA User Companion for LCA (LCS)**

ENOVIA Companion for LCA offers 3 steps to educate the user in LCA solutions. First, it gives all background information on Product Data Management (PDM) and Product Lifecycle Management (PLM). Then, it introduces the specific contribution of ENOVIA LCA to PLM by covering Process Centric, Process Product Resources (PPR) hub, and Knowledge sharing. Then it details how to use ENOVIA LCA capabilities through exercises. This product is ideally suited for the casual users and by extension to professional and engineers.

### **Companion Development Studio (CDS)**

The Companion Development Studio provides companies with the capability to customise the WLS suite of products. Through an intuitive interface, the sophisticated companion environment allows the development of integrated learning resources for CATIA, ENOVIA and SMARTEAM products usage. One can develop, assemble brand new material while reusing existing 'skillets', re-arranging existing products to fit targeted users, and add specific company's information into this customised learning environment. The Companion Development Studio promotes also the development of sound learning objects around a proven and robust instructional design model that is currently used by the WLS suite of products. Furthermore Companion Development Studio supports a continuous improvement process for the new learning objects.

# Products

## **SMARTTEAM Web-based Learning Solutions**

### **SMARTTEAM User Companion Fundamentals (SUS)**

With SMARTTEAM User Companion Fundamentals Product, you will learn how SMARTTEAM fulfills the PLM definition and where it provides specific support. This companion covers the following products: SMARTTEAM Editor and Workflow.

At the end of this course you will understand the added values of PLM and you'll know how SMARTTEAM supports it. You will work with SMARTTEAM Editor in the most efficient method to store, in a structured way, any information related to a project and share them within your enterprise. You will be able to take part to an already defined process and take advantage of the integration between the workflow and SMARTTEAM Editor to reduce the development time of your products.

After identifying the concepts of SMARTTEAM Workflow, you will be able to drive and to distribute information within an organisation throughout the extended enterprise.

You will be able to pilot and track any evolution by handling a process displayed in the internal mail box.

### **SMARTTEAM User Companion for CATIA Integration Product (CIS)**

This Companion targets the users who contribute to information related to the digital mock up using CATIA V5

At the end of this course you will be able to work with the CATIA Integration to build the digital mock up of your product. In addition you will know how to take advantage of CATIA's workbenches to produce information based on the 3D models.

This related information can be a drawing, an analysis and a manufacturing information. Moreover you will find in this course the needed information to take advantage of SMARTTEAM infrastructure to work in a collaborative environment.



*ENOVIA User Companion for VPM (VMS)*



*User Companion for DMU (DNS)*



*ENOVIA User Companion for LCA (LCS)*



*Companion Development Studio (CDS)*



*SMARTTEAM User Companion Fundamentals (SUS)*



*SMARTTEAM User Companion for CATIA Integration Product (CIS)*



For more information contact your IBM Marketing Representative, IBM Business Partner, or call one of the numbers below:

#### AMERICAS

<b>USA</b>	Toll-free 1 800 395 3339
<b>Canada</b>	(514) 938 6718
<b>Argentina</b>	(54) 11 4319 6594
<b>Brazil</b>	(55) 11 3050 5542
<b>Mexico</b>	(1) (52) 5 270 64 25

#### ASIA / PACIFIC

<b>Australia</b>	02 9842 9555
<b>China</b>	86 10 6539 1188 ext. 4774
<b>Hong Kong</b>	2825 7614
<b>India</b>	91 20 649724 / 649621
<b>Indonesia</b>	021 5238622
<b>Japan</b>	3 3808 8510
<b>Korea</b>	822 3781 7583
<b>Malaysia</b>	(603) 7720 2069
<b>New Zealand</b>	+64 9 359 8785
<b>Philippines</b>	2 819 2345
<b>Singapore</b>	65 320 1234
<b>Taiwan</b>	02 725 9493
<b>Thailand</b>	2 273 4406

#### EUROPE / MIDDLE EAST / AFRICA

<b>Austria</b>	1 211 45 2273
<b>Belgium</b>	2 225 2901
<b>CEMA</b>	+42 12 4954 1225
<b>Czech Republic</b>	27 213 1742
<b>Denmark</b>	45 233000
<b>Egypt</b>	539 2539
<b>Finland</b>	(0) 9 459 4151
<b>France</b>	01 49 05 70 64
<b>Germany</b>	01 805 426 756
<b>Greece</b>	1 688 14 76
<b>Hungary</b>	01 382 5500
<b>Israel</b>	(972) 3 697 8586
<b>Italy</b>	(39) 039 600 3767
<b>Netherlands</b>	020 513 3769
<b>Norway</b>	66 99 9361
<b>Poland</b>	22 878 6145
<b>Portugal</b>	21 7915005
<b>Romania</b>	21 224 1544
<b>Russia</b>	095 940 2000
<b>Slovakia</b>	+42 12 4954 1225
<b>Slovenia/Croatia</b>	01 479 6676
<b>South Africa</b>	0860 788 788
<b>Spain</b>	(34) 91 397 66 11
<b>Sweden</b>	8 763 4394
<b>Switzerland</b>	+41 58 333 5370
<b>Turkey</b>	0212 317 1305
<b>United Kingdom</b>	0870 010 2510

#### IBM Eurocoordination

Product Lifecycle Management  
Tour Descartes  
La Defense 5  
2, avenue Gambetta  
92066 Paris La Defense Cedex  
France

The IBM home page can be found at [ibm.com](http://ibm.com)

IBM, the IBM logo, [ibm.com](http://ibm.com) and the On Demand Business logo are registered trademarks of International Business Machines Corporation in the United States, other countries, or both.

CATIA® and ENOVIA® are registered trademarks of Dassault Systèmes.

SMARTEAM® is a registered trademark of SmarTeam Corporation Ltd.

Microsoft and Windows are trademarks of Microsoft Corporation in the United States, other countries, or both.

UNIX is a registered trademark of The Open Group in the United States and other countries.

Other company, product and service names may be trademarks, or service marks of others.

References in this publication to IBM products, programs or services do not imply that IBM intends to make these available in all countries in which IBM operates. Any reference to an IBM product, program or service is not intended to imply that only IBM products, programs or services may be used. Any functionally equivalent product, program or service may be used instead.

IBM hardware products are manufactured from new parts, or new and used parts. In some cases, the hardware product may not be new and may have been previously installed. Regardless, IBM warranty terms apply.

This publication is for general guidance only. Information is subject to change without notice. Please contact your local IBM sales office or reseller for latest information on IBM products and services.

Photographs may show design models.

© Copyright IBM Corporation 2005.  
All Rights Reserved.

[ibm.com/solutions/plm](http://ibm.com/solutions/plm)